

PUMP INFORMATION

- Type: Sump Pump(s)
 Grinder Pump(s)
 Non-Clog Pump(s)

Model NO: _____
 Rating: _____ GPM _____ TDH
 Motor: _____ HP _____ RPM
 Elec: _____ PH _____ HZ
 Elec: _____ FL AMPS _____ V

DISCHARGE PIPE

- 304 Stainless Steel
 Sch40 Galvanized Steel
 Sch80 PVC Pipe
 1 1/4"
 2"

Anti-Floatation Flange
 Fiberglass Encapsulated
 ASTM A-36 Steel

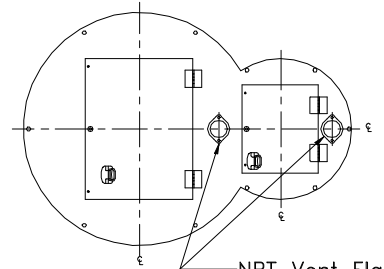
3/16" 304 Stainless Steel
 Lifting Cable
 * Stainless Steel Chain
 is Available

NPT Electrical Coupling
 Enameled Steel
 Stainless Steel

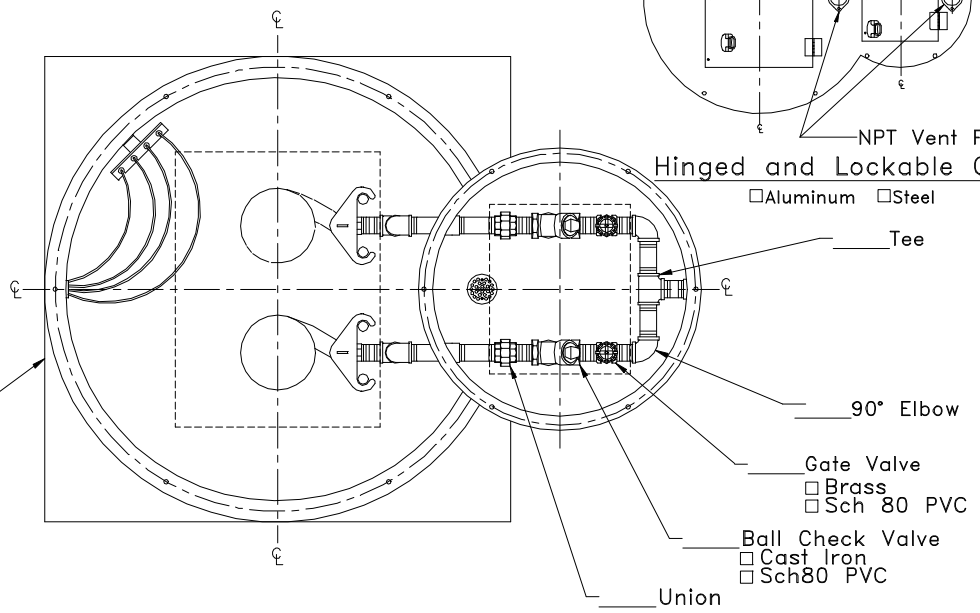
304 Stainless Steel
 Float Bracket
 w/ (4) Cord Grips
 Floats
 304 Stainless Steel
 Upper Pump Bracket

Cast Iron Inlet Hub
 (Different Sizes and
 Types Available)

- ELEV
- INV ELEV
- ELEV HIGH LEVEL ALARM
- ELEV PUMP #2 ON
- ELEV PUMP #1 ON
- ELEV PUMP OFF
- ELEV

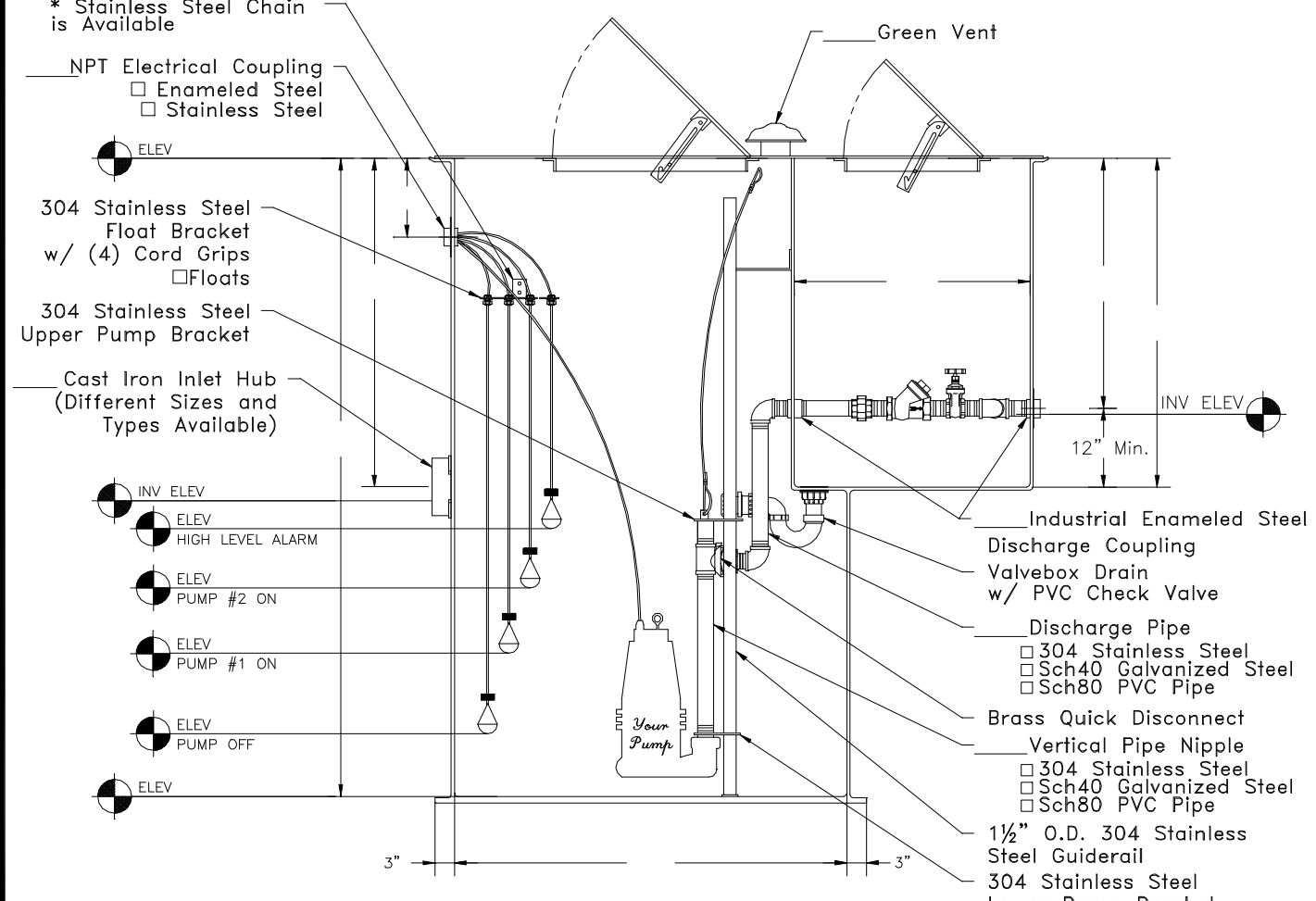


Hinged and Lockable Cover
 Aluminum Steel



- _____ Tee
- _____ 90° Elbow
- _____ Gate Valve
 Brass
 Sch 80 PVC
- _____ Ball Check Valve
 Cast Iron
 Sch80 PVC
- _____ Union

Green Vent



- _____ Industrial Enameled Steel
 Discharge Coupling
- _____ Valvebox Drain
 w/ PVC Check Valve
- _____ Discharge Pipe
 304 Stainless Steel
 Sch40 Galvanized Steel
 Sch80 PVC Pipe
- _____ Brass Quick Disconnect
- _____ Vertical Pipe Nipple
 304 Stainless Steel
 Sch40 Galvanized Steel
 Sch80 PVC Pipe
- _____ 1 1/2" O.D. 304 Stainless
 Steel Guiderail
- _____ 304 Stainless Steel
 Lower Pump Bracket



Prefabricated Fiberglass
 SGR Lift Station
 Reference: Duplex SGR
 Cylindrical Valvebox
 Scale: None
 Drawn By: RM
 App'd By: .
 Date: 05/19/03
 Highway 25 North P.O. Box 420
 Rochester, IN 46975
 Phone: 800/354-4534 Fax: 574/223-6106
 Supersedes Prints
 Prior To: 05/19/03
 Reference No: 11091

Revisions

Ⓐ	First Released.

This print is and contains confidential proprietary information owned exclusively by TOPP INDUSTRIES, INC. It is furnished on a strictly confidential basis. This restriction includes, but is not limited to the condition that this print will not only be used as a record or to identify or inspect parts or for other information purposes and will not be used to manufacture or procure the manufacture of the items shown in this print by any other source than TOPP INDUSTRIES, INC.